



REDEFINING THE 'ONE MAN SHOW' CONTINUED

BY: NIKOLAY KORYGIN

The background is a blue gradient with white circuit-like lines in the corners. The lines consist of straight segments and small circles, resembling a printed circuit board or a network diagram. They are positioned in the top-left, top-right, bottom-left, and bottom-right corners.

PROJECT 1 RECAP

THE PROBLEM



- As an entertainment engineer, have you ever found yourself wearing multiple hats at once, frantically trying to operate multiple programs or consoles simultaneously?
 - Sound board
 - Light board
- As a lighting designer, running back and forth from the light board to a seat trying to ensure your audience is experience exactly what you envisioned from all angles
- Maybe you're all the way up on the catwalk changing lightbulbs, needing to constantly power on and off circuits, but it's only you on the run crew?

THE BENEFIT

- Nobody wants to run around a venue all day... time is money
- Imagine having full system control from the touch of your fingers, anywhere within your venue
- Complete show automation with precision execution, removing the possibility of human error
- The best of all, reducing overall production run costs



WHERE CAN THIS BE IMPLEMENTED



UT Austin Iden B. Payne Theatre



Mandala Cancun Nightly Midnight Bass Drop



EDC Las Vegas Nightly kineticFIELD Display

Theatres, Clubs, Music Festivals, Arenas, Themed Rides, Museums, Theme Parks, and more!

ANYWHERE THERE NEEDS TO BE A/V AUTOMATION

PROJECT 1 IMPLEMENTATION



The background is a blue gradient with white circuit-like lines in the corners. The lines consist of straight segments and small circles, resembling a printed circuit board or a network diagram. They are positioned in the top-left, top-right, bottom-left, and bottom-right corners.

PROJECT 2 RECAP

THE PROBLEM



- My first project I was only able to implement the system with a simulated setup including a virtual...
 - Hog Full Boar Console
 - MIDI Interface
 - Lighting Visualizer

I don't know how to build the visualizer file and needed to learn



THE SOLUTION

1. Implement the system in real life! Proving possibility by also performing in the show
 - This time using an ETC Eos Console so I am more well versed in industry standard lighting consoles
 - Complete my Project 3 goal before the class was cut from 4 to only 3 projects
 - This demonstrates the systems versatility/flexibility with a variety of spaces and equipment
2. Build a visualizer file for a venue I often design lighting at allowing me to preprogram at home
 - Learn how to use commonly used Capture visualizer software
 - Become more proficient in Vectorworks, a common CAD program used to build outlines visualizers for Capture

PRESENTING DANCE ACTION'S

S.E.E.D.

Students Exhibiting
Experimental Dance

March 3rd and 4th at 7:30 pm
Lab Theater

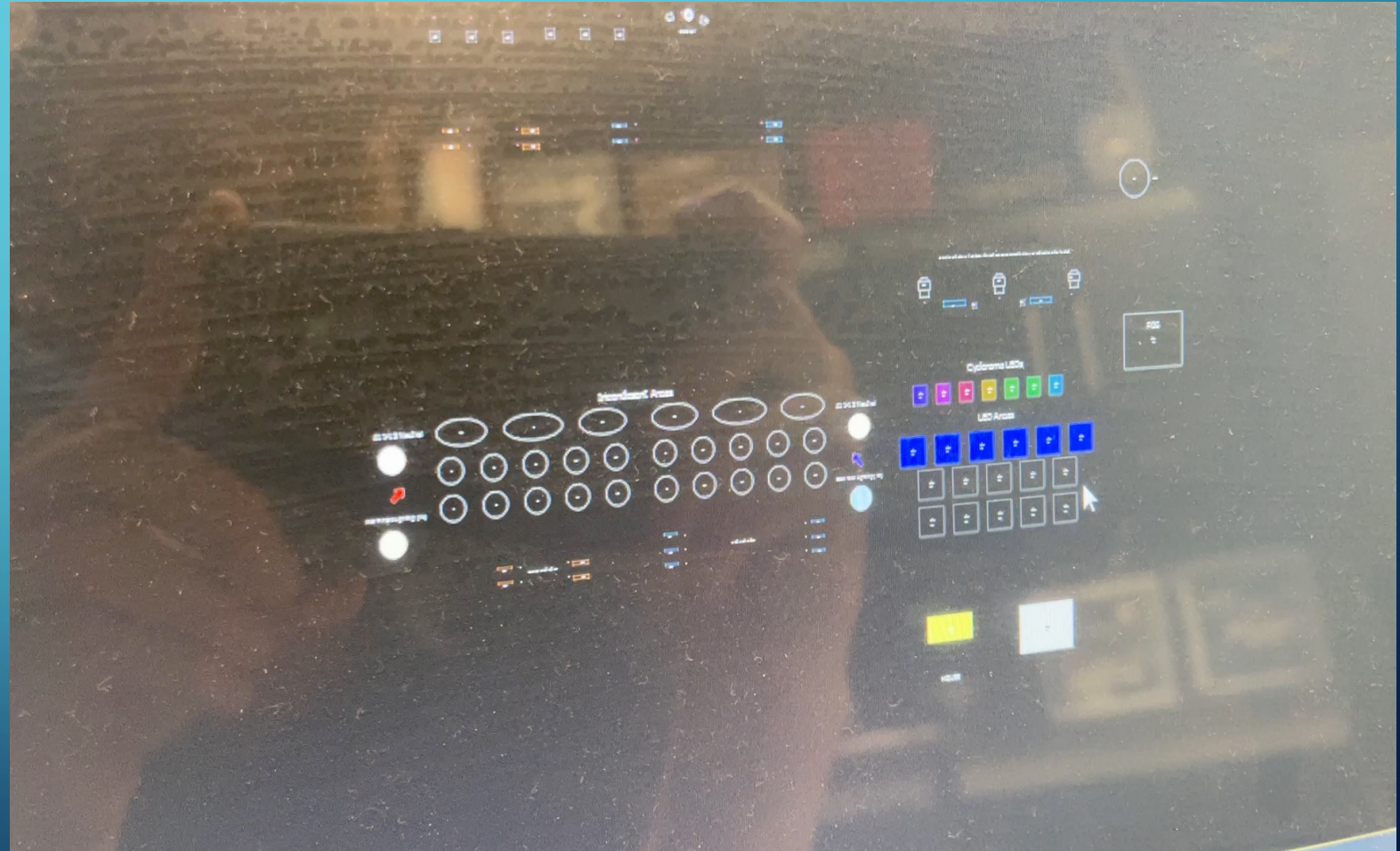
UT LAB Theatre 3/1-4



Anderson High School 3/5

PART 2

- The original plan was for me to make a repertory plot visualizer for my high school theatre
- Upon arrival, I had to redo the whole rep plot due to poor system maintenance for a renter of the space



PART 2

- Full system functionality after my maintenance for use during space rental
- During my visit, I had to refocus and regeel the entire catwalk as well as all the side lighting in addition to replacing 17 light bulbs throughout the space
- Due to the the unexpected poor maintenance of the system and an upcoming musical which uses a custom plot, the school is hiring me to return after the musical run to revert the space to it's rep plot, I will then be building the visualizer after the musical when I have proper full access to the space without scenery and scaffolding on stage which requires a custom plot
- The visualizer I plan on incorporating potentially into Module 3 if time allows considering I will be returning to that high school campus the first week of May to perform work which is the final week for UT



The background is a blue gradient with white circuit-like lines in the corners. The lines consist of straight segments and small circles, resembling a network or data flow diagram.

PROJECT 3

THE PROBLEM

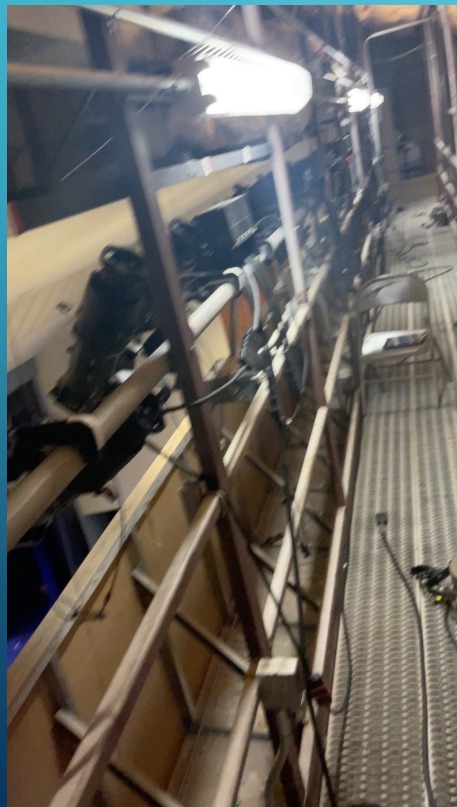


- As a fine arts educator oftentimes, you are required to share a performing space such as a PAC. Have you ever found yourself frantically preparing for an upcoming performance, programming lighting cues the day before the show because band or choir were using the space the evening before?
- Maybe you're all the way up on the catwalk changing lightbulbs, needing to constantly power on and off circuits, but it's only you who knows how to in the department and you have 10+ lamps to replace, having to climb a ladder each time you need to power on or off a circuit?

THE SOLUTION PART 1

Permanent OSC Controller Installation

It usually takes me 10 min per lamp without an OSC controller, climbing up and down the ladder to power on and off each circuit in the booth, but in just 25 min I was able to replace 8 lamps



PART 1.5 ORDERING NEEDED SUPPLIES

I ordered supplies and talked to the directors regarding a professional 240v outlet installation for the Super Trouper II (specifically for its ballast power unit) I advocated for in their 2020 lighting master plan vs a less safe adapter I was planning on ordering from amazon

They had a heightened budget this year due to roll over funds from 2020 & 2021 and have an electrician scheduled to perform the job for them to finally have a usable spotlight. For the past 2 years they've been using a Source4 mounted on a tripod, plugging and unplugging live stager pin to turn on and off the makeshift 'spotlight' which posed a spark safety hazard

- No Color Blue Gel (Ordered 6 Sheets)

<https://www.filmandvideolighting.com/rosco-roscolux-60-no-color-blue-lighting-gel-filter-stage-theater.html>

- Bastard Amber Gel (Ordered 6 Sheets)

<https://www.adorama.com/ro2.html>

- Source 4 Lamps (Ordered 20) OSRAM HPL 575/120/X, HPL575/120X, HPL 575/120VX

<https://www.bulbconnection.com/ViewEquipment/bcrw/eit/615/item.html>

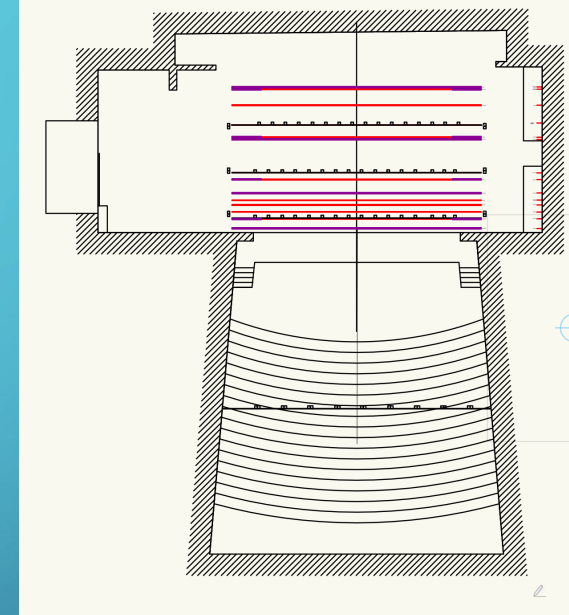
- Source 4 Lamp Holders (Ordered 10)

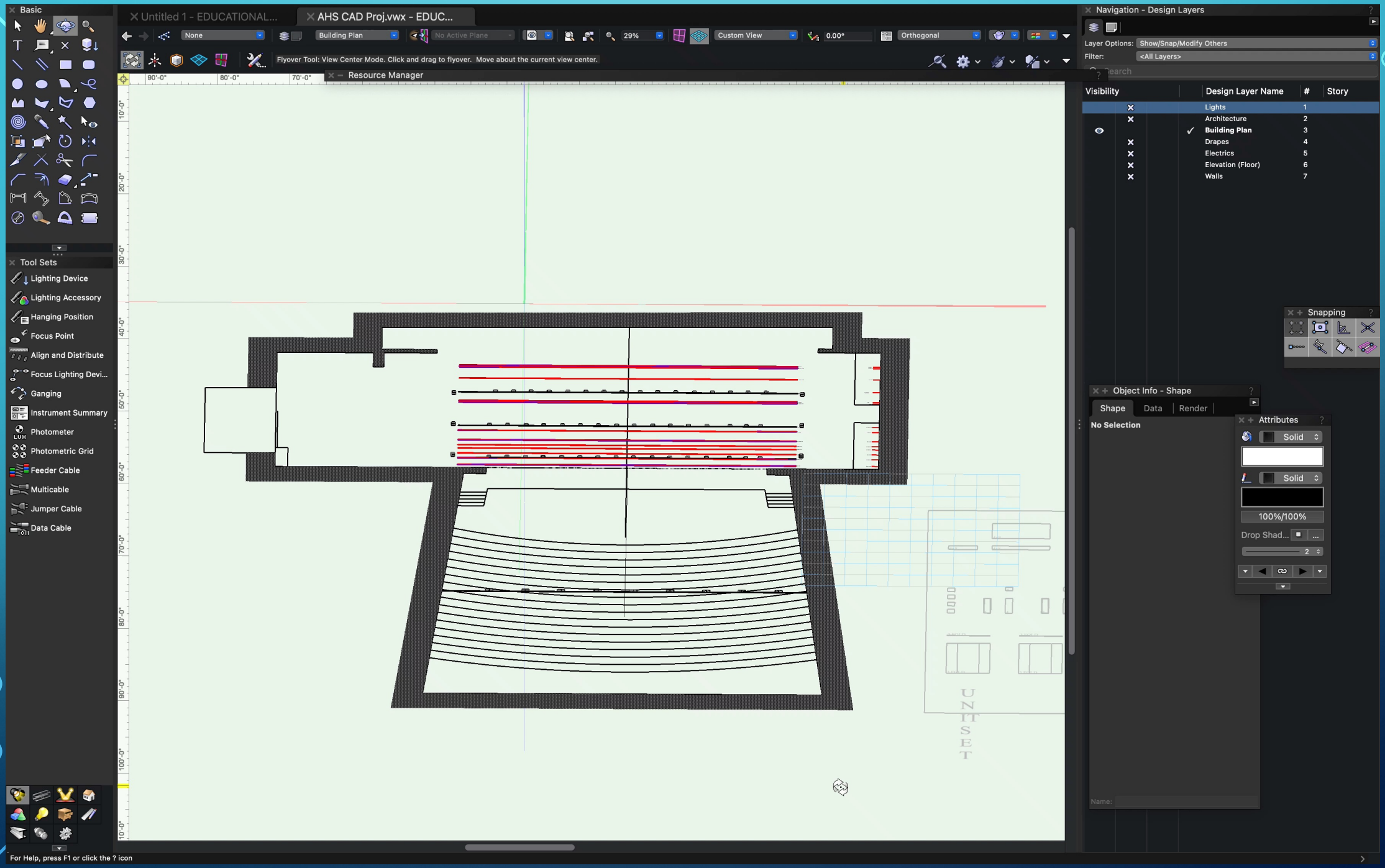
https://www.bulbamerica.com/products/sylvania-69818-g9-5-2-pin-hpl-socket-tp-22h-lamp-holder?CAWELAID=120150920004364872&CATARGETID=120150920006220281&CADevice=c&qclid=CjwKCAjw9e6SBhB2EiwA5myr9v4pyfu1Ff5SJywNPZanhI2-ftR51MEiY-7w3kmvD7V72VNd9LXZYhoCEhsQAvD_BwE



PART 2

- Building an interactive visualizer customized for the space which directors and students can use to preprogram light cues before even entering the space, only having to plug a flash drive into the console and their whole show file is ready to go
- First a 3D model of the space is made tracing over the building's blueprints using Vectorworks or a similar CAD program
- Next detailed architecture of the space and light fixtures are added into the model
- Finally, the model is taken into Capture, a software designed to take these 3D files and make them interactive based on commands it would receive as an executable/.exe. file



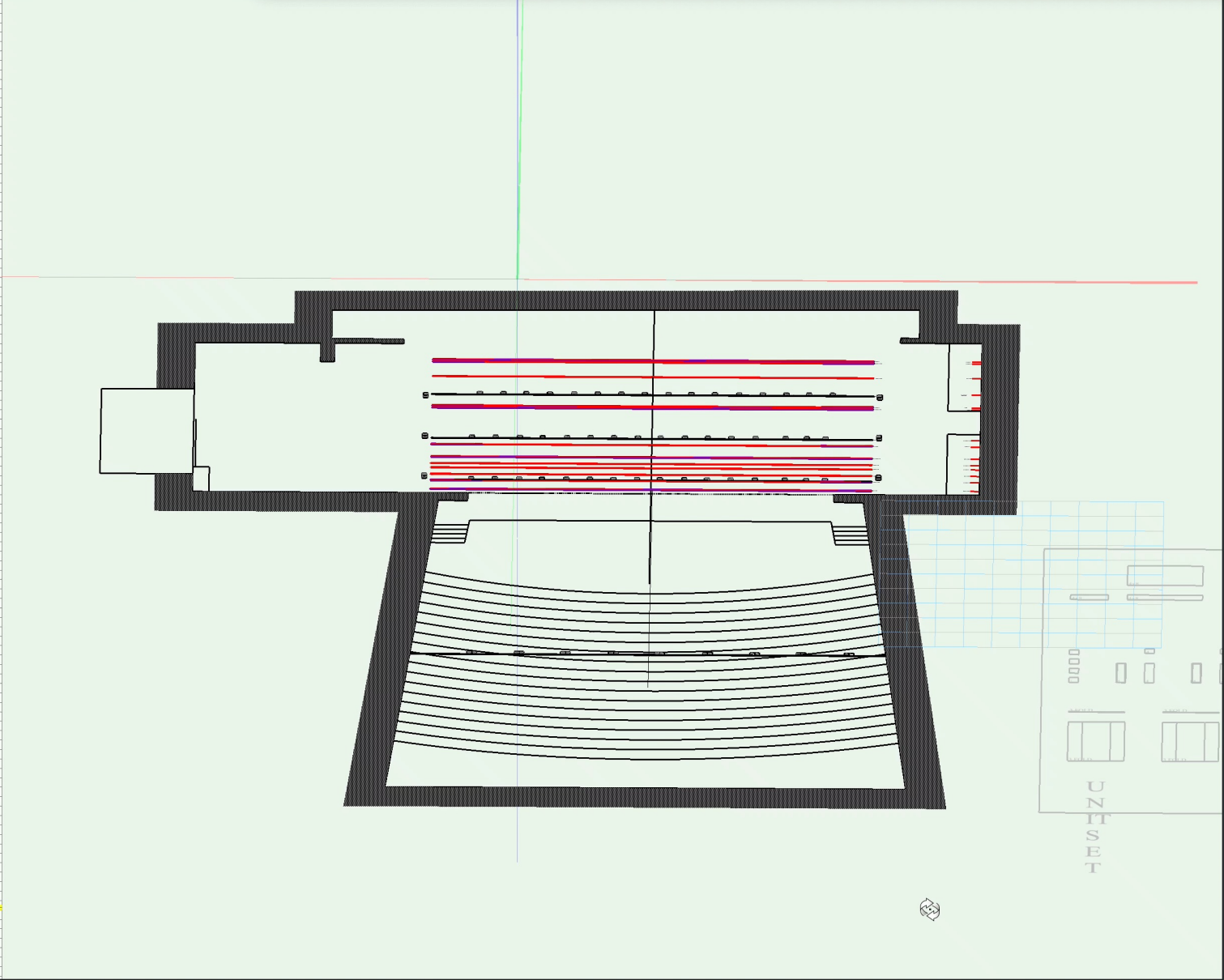


Untitled 1 - EDUCATIONAL... AHS CAD Proj.vwx - EDUC...

None Building Plan No Active Plane 29% Custom View Orthogonal 0.00°

Flyover Tool: View Center Mode. Click and drag to flyover. Move about the current view center.

90-0" 80-0" 70-0" Resource Manager



Navigation - Design Layers

Layer Options: Show/Snap/Modify Others
Filter: <All Layers>

Visibility	Design Layer Name	#	Story
<input checked="" type="checkbox"/>	Lights	1	
<input checked="" type="checkbox"/>	Architecture	2	
<input checked="" type="checkbox"/>	Building Plan	3	
<input checked="" type="checkbox"/>	Drapes	4	
<input checked="" type="checkbox"/>	Electrics	5	
<input checked="" type="checkbox"/>	Elevation (Floor)	6	
<input checked="" type="checkbox"/>	Walls	7	

Snapping

A set of icons for the snapping tool, including a square, a circle, and a line, with plus and minus signs.

Object Info - Shape

Shape Data Render

No Selection

Attributes

Solid

Solid

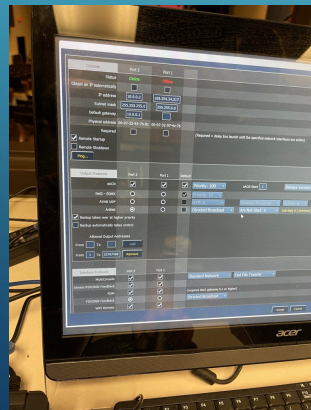
100%/100%

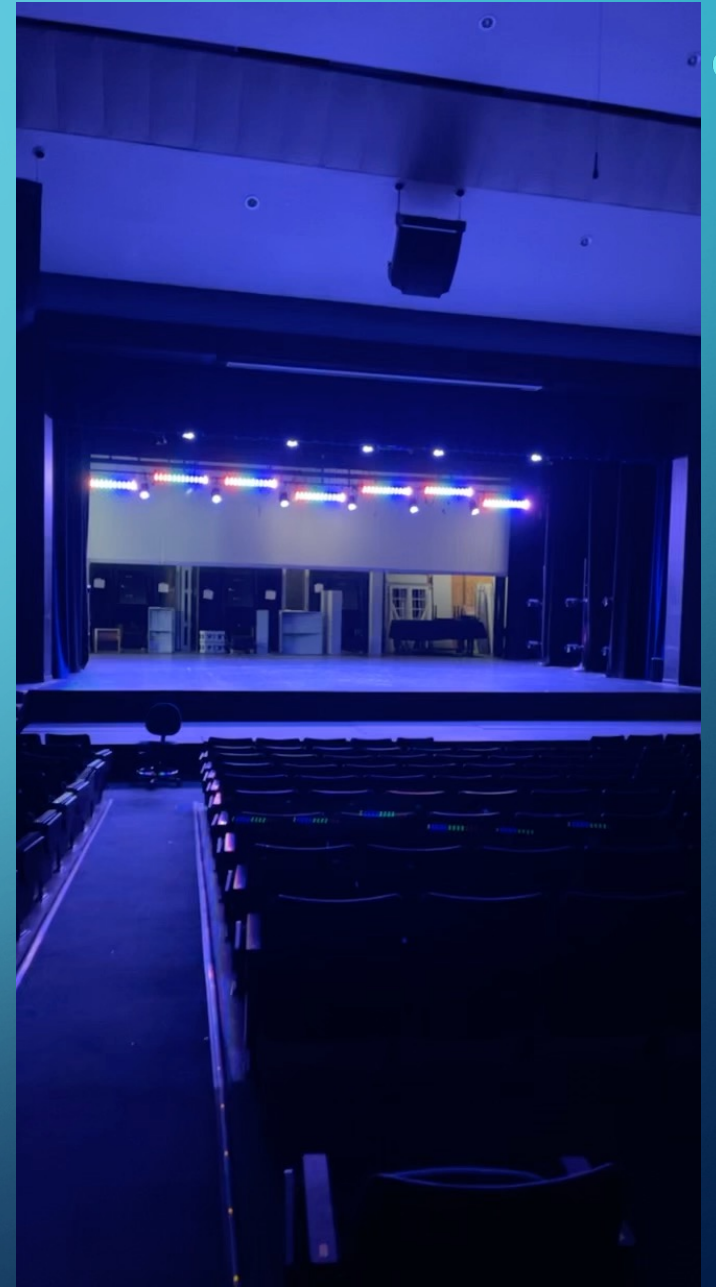
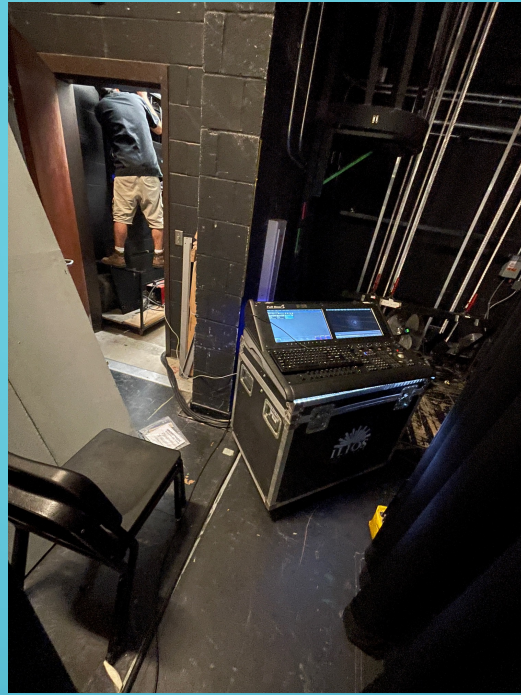
Drop Shad... 2

Name:

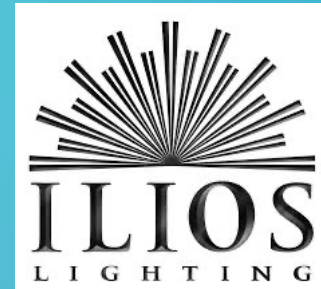
AFTERMATH

- Progress was delayed on part 2 when ILIOS lighting came into the space for their yearly install of intelligent lighting for the AHS Belles Spring Show, my time was devoted to assisting the designer adapt his equipment to the new lighting system vs the one he has worked with for 14 years
- We ran into significant problems when trying to tap into the systems managed gateway for sACN protocol





AFTERMATH



- Despite this setback, I am thrilled to say this opportunity has led me to accept a job offer from ILIOS Lighting
- I was told I will be employed in their warehouse for the first few months to get acquainted with the company's technology, then enter the field as an ILIOS Designer. I will be designing lighting for parts of ACL (specifically the Miller Lite and T-Mobile Stage) and Lollapalooza 2023
- I am still working on the exe. file within Capture due to technical errors with Captures software when importing my dmg. file, however, it is only a few days away from completion
- I will install this visualizer on a Windows PC next to the their ETC ionXE which will give the facility the ability to program lighting in 'Blind' mode as well as away from the light board on their computers at home or in the black box
- I truly enjoy giving back to my community and am pleased to have been once again invited into their space to help with their needs

RESOURCES

https://support.etconnect.com/HES/Consoles/Hog_4/Networking/How_To_Setup_Touch_OSC_and_Hog_4

<https://www.etconnect.com/Products/High-End-Systems/Hog-4-Consoles/>

<https://www.etconnect.com/Products/High-End-Systems/Hog-4-Consoles/Hog-4-18/Software.aspx>

<https://hexler.net/touchosc-mk1>

<https://www.businessinsider.com/how-to-find-ip-address-of-router>

<https://darksideofthecurtain.tumblr.com/post/173553090726/how-i-program-with-nomad>

<https://www.etconnect.com/Products/Consoles/Eos-Family/>

<https://www.reaper.fm/sdk/osc/osc.php>

https://www.youtube.com/watch?v=cs246o9CDiA&ab_channel=ETCLiveEvents

The background is a dark blue gradient. In the corners, there are decorative white line-art elements resembling circuit traces or neural network connections, with small circles at the end of the lines.

Thank you kindly for your time

Questions, Comments, Concerns